


2P Series 2/2 Solenoid Valve (Plastic Steel Type)



Ordering Code

2P — **025** — **06** — **AC220V** — 

Specification Code
 2P: Two-position Two-way Solenoid Valve (Reinforced plastic steel type)

Aperture of Flow Rate
 025: 2.5mm

Port Size
 06: G1/8" 08: G1/4"

Standard Voltage
 DC12V DC24V
 AC24V 50Hz/60Hz
 AC110V 50Hz/60Hz
 AC220V 50Hz/60Hz
 AC380V 50Hz/60Hz

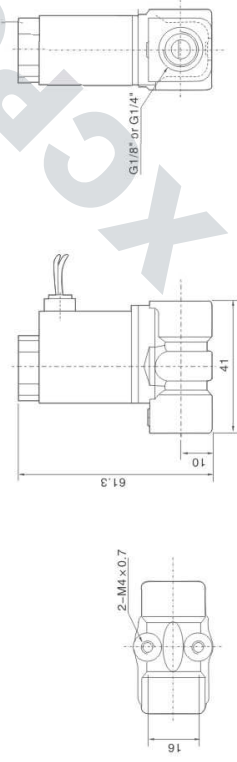
Wiring Form
 Blank Lead wire Type
 D: Joint Connector



Specification

Model	2P025-06	2P025-08
Working Medium	Air, Water, Oil, Gas	
Motion Pattern	Direct Drive Type	
Type	Normal Close Type	
Aperture of Flow Rate (mm)	2.5	
CV Value	0.23	
Port Size	G1/8"	G1/4"
Operation Fluid Viscosity	20 CST (Below)	
Working Pressure	0-0.7MPa	
Max. Pressure Resistance	1.0MPa	
Operating Temperature Range	-5~+80°C	
Voltage Range	±10%	
Material of Body	Engineering Plastic Steel	
Material of Oil Seal	NBR EPDM or VITON	


Overall Dimensions



2W(UD) Series 2/2 Direct Drive Type Solenoid Valve (Small Aperture)



Ordering Code

2W — **025** — **08** — **F** — **AC220V** — 

Specification Code
 2W: Two-position Two-way solenoid valve direct drive type
 2WH: Two-position Two-way solenoid valve (high pressure direct drive type)

Aperture of Flow Rate
 025: 2.0mm
 040: 4.0mm

Port Size
 06: G1/8"
 08: G1/4"
 10: G3/8"

Initial Estate
 Blank Pipe Joint Type
 F: Flange Type

Standard Voltage
 DC12V DC24V
 AC24V 50Hz/60Hz
 AC38V 50Hz/60Hz
 AC110V 50Hz/60Hz
 AC220V 50Hz/60Hz
 AC380V 50Hz/60Hz

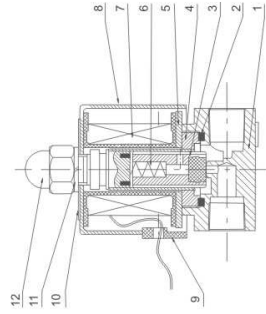
Wiring Form
 Blank Lead Wire Type
 D: Joint Connector
 E: Blast-proof Coil
 G: Water-proof Coil

Specification

Model	2W025-06	2W025-08	2W040-10	2WH012-06	2WH020-10
Working Medium	Air, Water, Oil, Gas				
Motion Pattern	Direct Drive Type				
Type	Normal Close Type				
Aperture of Flow Rate (mm)	2.5	4	1.2	2	2
CV Value	0.23	0.60	0.05	0.15	0.15
Port Size	G1/8"	G1/4"	G1/8"	G1/4"	G3/8"
Operation Fluid Viscosity	20 CST (Below)				
Working Pressure	Air, Water, Oil, Gas: 0-0.7MPa				
Max. Pressure Resistance	1.0				
Operating Temperature Range	-5~+80°C				
Voltage Range	±10%				
Material of Body	Brass				
Material of Oil Seal	NBR EPDM or VITON				

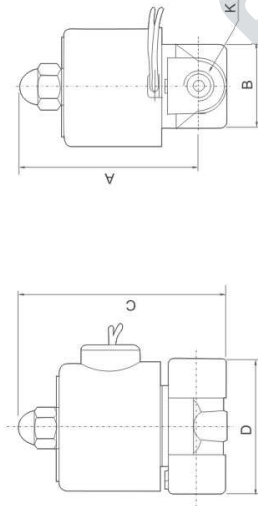
2W(UJ) Aperture 2/2 Direct Drive Type Solenoid Valve(Small Aperture)

Internal structure



NO	Body Of Valve
1	O-ring
2	Assembly Of Iron Core
3	Assembly Of Iron Core
4	Magnetic Plate
5	Spring
6	Assembly Of Coil
7	Iron Cover
8	Cord-locks
9	Name Plate
10	Gasket
11	Head Cover Nut
12	

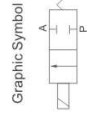
Overall Dimensions



Dimension Sheet

Symbol/Model	A	B	C	D	K(PT)
2W025-06	66	30.3	75	41.5	G1/8"
2W025-08	66	30.3	75	41.5	G1/4"
2W040-10	74	32.2	85.5	53	G3/8"
2WH012-06	66	30.3	75	40.5	G1/8"
2WH012-08	66	30.3	75	40.5	G1/4"
2WH020-10	74	32.3	85.5	53	G3/8"

2W(UW) Series 2/2 Direct Drive Type Solenoid Valve(Large Aperture)



Ordering Code

2W	160	15	F	AC220V	Wiring Form
Specification Code	Aperture of Flow Rate	Port Size	Initial Estate Type	Standard Voltage	Blank-Lead Wire Type
2W:Two-position two-way solenoid valve (direct drive type)	160:16mm 200:20mm 250:25mm 350:35mm 400:40mm 500:50mm	10:G3/8" 15:G1/2" 20:G3/4" 25:G1" 35:G1 1/4" 40:G1 1/2" 50:G2"	F: Flange Type	DC12V DC24V AC24V 50Hz/60Hz AC36V 50Hz/60Hz AC110V 50Hz/60Hz AC220V 50Hz/60Hz AC380V 50Hz/60Hz	Blank-Lead Wire Type D: Joint Connector

Specification

Model	2W160-10	2W160-15	2W200-20	2W250-25	2W350-35	2W400-40	2W500-50
Working Medium	Air,Water,Oil,gas						
Motion Pattern	Direct Drive Type						
Type	Normal Close Type / Normal Open Type						
Aperture of Flow Rate(mm)	16	20	25	35	40	40	50
CV Value	4.8	7.6	12	24	29	29	48
Port Size	G3/8"	G1/2"	G3/4"	G1"	G1 1/4"	G1 1/2"	G2"
Operation Fluid Viscosity	20 CST (Below)						
Working-pressure	Air:0-0.7MPa	Water:0-0.5MPa	Oil:0-0.5MPa	Gas: 0-7MPa			
Max. Pressure Resistance	1.0MPa						
Operating Temperature Range	-5~+80°C						
Voltage Range	± 10%						
Material of Body	Brass						
Material of Oil Seal	NBR EPDM or VITON						