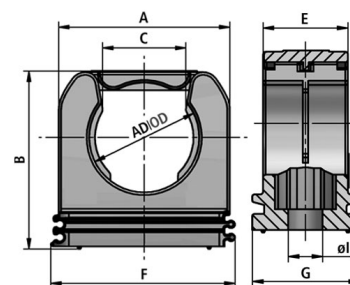


RQS

Tubing clamp systems for light, medium and heavy duty applications

One-piece tubing clamp for medium and heavy applications with through hole for fastening by screws, ribbed fixing for strain relief, quick assembly, cover connected with integral hinge, assembly of varying sizes joined feasible, applicable in combination with C-profile bars



Temperature: -40°C ... +120°C

Material: PA plastics



FLEXA No.	Colour	OD [mm]	A [mm]	B [mm]	C [mm]	E [mm]	F [mm]	G [mm]	Ø I [mm]	Weight [kg/100]	PU [pcs.]
5030.020.207	Black	OD 10,0	21,0	23,5	8,5	16,0	23	20	5,5	0,470	50
5030.020.209	Black	OD 13,0	25,0	25,0	9,2	16,0	27	20	5,5	0,640	50
5030.020.211	Black	OD 15,8	27,0	27,0	11,2	16,0	29	20	6,5	0,700	50
5030.020.213	Black	OD 17,8	31,0	31,5	12,7	16,0	32	20	6,5	0,880	50
5030.020.216	Black	OD 21,2	33,0	34,0	16,1	16,0	35	20	6,5	0,940	50
5030.020.221	Black	OD 28,5	40,0	40,5	20,5	16,0	42	20	6,5	1,000	25
5030.020.229	Black	OD 34,5	46,0	46,9	25,7	16,0	48	20	6,5	1,390	25
5030.020.236	Black	OD 42,5	55,0	55,0	30,0	16,0	57	20	6,5	1,770	25
5030.020.248	Black	OD 54,5	67,0	69,5	38,0	16,0	69	20	6,5	2,450	10
5030.020.007	Grey	OD 10,0	21,0	23,5	8,5	16,0	23	20	5,5	0,470	50
5030.020.009	Grey	OD 13,0	25,0	25,0	9,2	16,0	27	20	5,5	0,640	50
5030.020.011	Grey	OD 15,8	27,0	27,0	11,2	16,0	29	20	6,5	0,700	50
5030.020.013	Grey	OD 17,8	31,0	31,5	12,7	16,0	32	20	6,5	0,880	50
5030.020.016	Grey	OD 21,2	33,0	34,0	16,1	16,0	35	20	6,5	0,940	50
5030.020.021	Grey	OD 28,5	40,0	40,5	20,5	16,0	42	20	6,5	1,100	25
5030.020.029	Grey	OD 34,5	46,0	46,9	25,7	16,0	48	20	6,5	1,390	25
5030.020.036	Grey	OD 42,5	55,0	55,0	30,0	16,0	57	20	6,5	1,770	25
5030.020.048	Grey	OD 54,5	67,0	69,5	38,0	16,0	69	20	6,5	2,450	10

Recommendations for any areas of applications, products, or product combinations are issued to the best of FLEXA's knowledge and experience. The user is requested to check applicability of FLEXA products to specific applications and purposes prior to the use of the particular products. All documentation, illustrations, and charts published are subject to copyright and must not be copied, changed, used, or modified. Technical drawings, certificates, authorizations, and results by the FLEXA lab will be provided upon request. FLEXA will not be held liable for typographical or other errors and incorrect drawings. Technical modifications are subject to change without prior notice.