

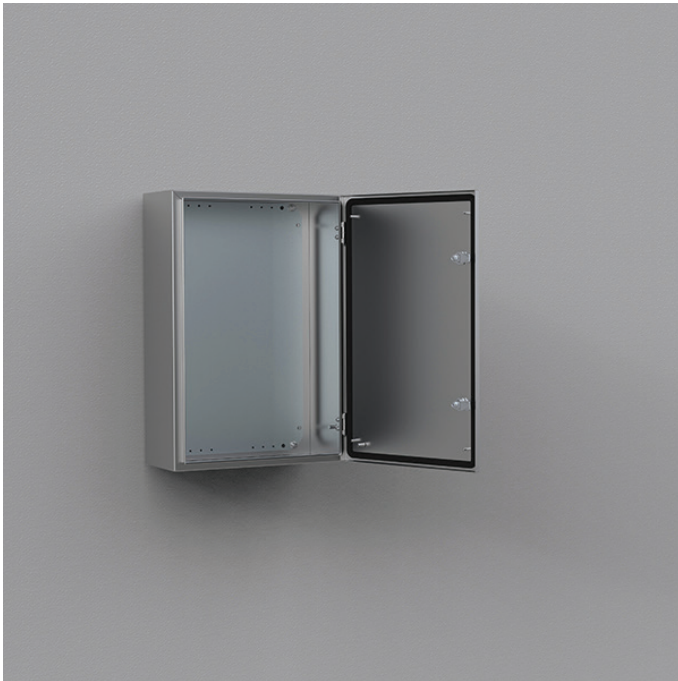
ASR0404021

Stainless steel, single door enclosure

nVent

HOFFMAN

CONNECT AND PROTECT



The stainless steel single door wall mounted enclosure range, ASR, with a IP 66 protection degree, is available off the shelf in many different sizes. The risk for component failure, and with that unnecessary downtime, is eliminated as water and dust are prevented from entering the enclosure. This enclosure range is well suited for industries such as food and beverage and pharmaceuticals, as well as almost all other environments, grade dependant.



IP 66 | TYPE 4X, 12, 13 | IK 10

With mounting plate

H	400
W	400
D	210
h	370
w	350
d	192
N° of locks	1
Weight (kg)	8.85
Item no.	ASR0404021

Material: AISI 304L / AISI 316L pre-grained stainless steel. Body: 1.5 mm. Door for AISI 304L: 1.5 mm / 2 mm for enclosures with a height or width of 600 mm or greater. Door for AISI 316L: 2 mm. Mounting plate: 2 mm galvanized steel.

Body: Folded and seam welded.

Door: Corner formed in one piece. Surface mounted, with 130° opening. Concealed AISI 304 stainless steel hinges with captive pin. Can be mounted to allow left or right hand opening. For AISI 316L, sealing is ensured by an injected one piece silicone gasket. Inner M6 welded studs, to mount door profiles MMDP.

Lock: nVent HOFFMAN customized zamak double-bit 3 mm lock, with 90° movement and anti-vibration mechanism. Two locks for 600 mm high to 800 mm high enclosures. Espagnolette three point locking or 3 locks for 1000 mm high enclosures and above. Stainless steel lock and other versions are available as accessories.

Mounting plate: The mounting plate is marked vertically at 10 mm intervals, for easy horizontal positioning of equipment. On the top and bottom there are holes to facilitate cable fixing. Fixed onto M8 press welded studs to the rear of the enclosure. All sides, from 800 mm and above, are strengthened by folded edges. By using the AMG accessory, the mounting plate position can be adjusted to any depth.

Cable access: No gland plate openings as standard, to maximise sealing and cleanliness.

Protection: Corresponds with IP 66 | TYPE 4X, 12, 13 | IK 10.

Finish: 400 pre-grained stainless steel.

Delivery: Enclosure with door, mounting plate, plastic double-bit 3 mm key, and mounting accessories. Metallic key, for height 1000 mm and above.

Additional information: For outdoor environments, exposed to precipitation, the use of a rain hood is advised. Also in environments known for quick temperature changes, consideration to condensation should be taken. Please see the thermal management section.