

ECX Series 22mm Metal Pilot Devices

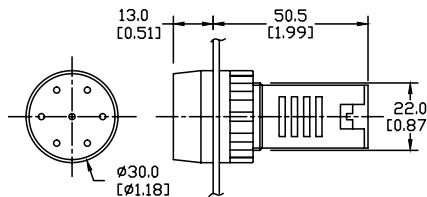
Audible annunciator



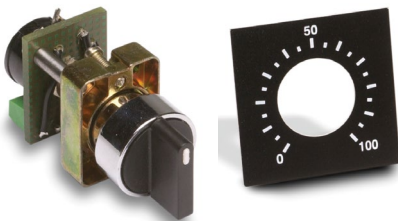
Part Number	Color	Price	Description
ECX2070-24	Black	\$6.50	22mm, 25mA audible (80dB at 10cm) buzzer annunciator. 24VAC/DC
ECX2070-127	Black	\$6.50	22mm, 25mA audible (80dB at 10cm) buzzer annunciator. 120VAC/DC
ECX2071-24R	Red	\$8.50	22mm, 25mA audible (80dB at 10cm) buzzer annunciator with non-replaceable LED indicator. 24VAC/DC
ECX2071-127R	Red	\$8.50	22mm, 25mA audible (80dB at 10cm) buzzer annunciator with non-replaceable LED indicator. 120VAC/DC

- 80dB @ 10cm
- 25mA @ 24V
- Intermittent sound when energized
- IP20 before installation
- IP65 after installation

Dimensions: mm [inches]

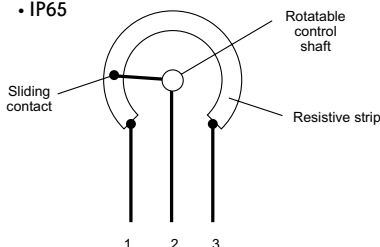


22mm potentiometer

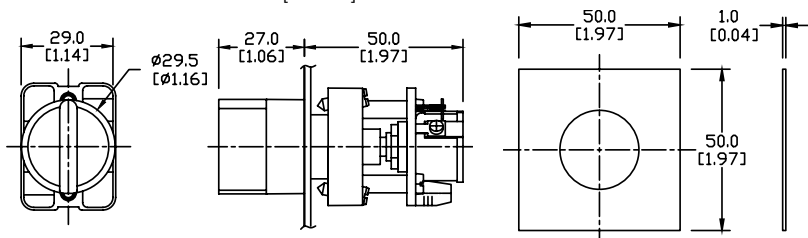


Part Number	Quantity	Price	Description
ECX2300-5K	pkg. of 1	\$36.50	22mm potentiometer with 5k Ω resistance, \pm 10%. Nominal voltage: 250V. Rated dissipation: 2W at 25°C. Temperature range -40°C to 70°C. Black handle. Connection type is screw terminal, 3-pole, 22-14 AWG.
ECX2300-10K	pkg. of 1	\$36.50	22mm potentiometer with 10k Ω resistance, \pm 10%. Nominal voltage: 250V. Rated dissipation: 2W at 25°C. Temperature range -40°C to 70°C. Black handle. Connection type is screw terminal, 3-pole, 22-14 AWG.
ECX2640	pkg. of 1	\$3.50	22mm legend plate for potentiometer with 0% to 100% marking, 50mm square. 50 x 50 x 1mm with 24.5 mm cutout.

- IP65



Dimensions: mm [inches]



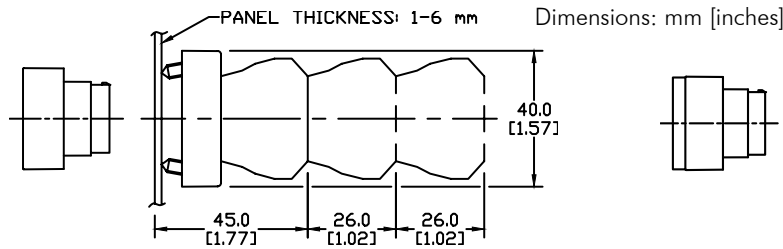
For accessories, see 22mm Metal Pilot Device Accessories in this section.

GCX Series 22mm Plastic Pilot Devices Specifications

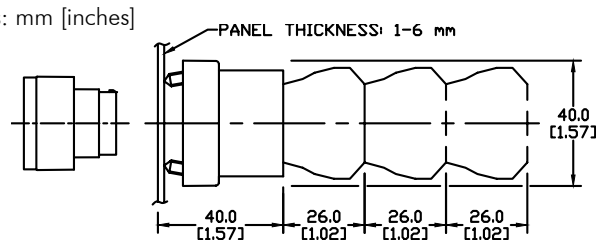
Assembly information

These pushbuttons and indicator lights are supplied with the appropriate contact blocks, unless otherwise indicated. Use these drawings as a guide to make sure there is adequate clearance behind the panel.

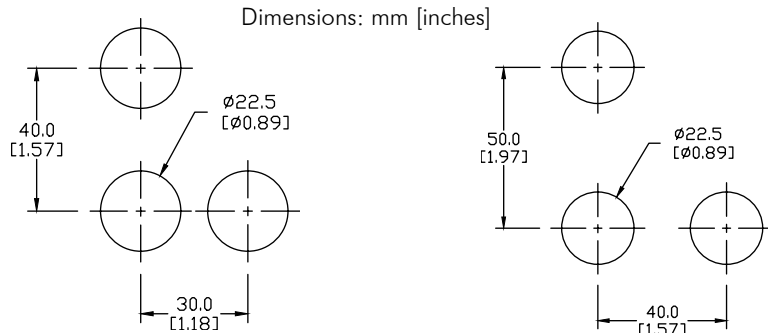
Pushbuttons and selector switches



Illuminated pushbuttons and selector switches/indicator lights

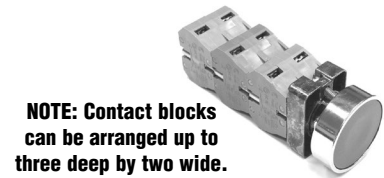


Mounting



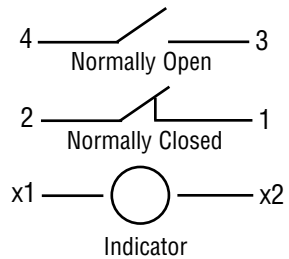
This layout is suitable if all switches are 230V or less and the same polarity.

This layout is suitable if all switches are 400V or less and different polarity.



NOTE: Contact blocks can be arranged up to three deep by two wide.

Typical Wiring



Specifications

These specifications apply to all the GCX and ECX 22mm plastic pushbuttons and switches.

Physical Specifications		Electrical Specifications	
Standards Reference	CEI EN 60947-5-1, CSA C22-2 n.14	Rated Thermal Current (contact block)	A300, Q300 (Refer to E22 Series mounting/contact rating section for details)
Approvals	UL File E189258, IMQ (where specified)	Rated Insulation Voltage	Ui 660V according to CEI EN 60947-5-1, 300V according to CSA C22-2 n.14 and UL 508
Enclosure Material	Fiberglass reinforced thermoplastic	Dielectric Strength	3kV (1 second)
Contacts Material	Silver	Insulation Resistance	2MΩ min. (500VDC)
Protection Degree	IP 40 for GCX3151-24, GCX3151-120, GCX3153-24 and GCX3153-120. IP 65 for all others. (See Appendix of this catalog for explanation of IP ratings according to IEC 144 CEI 70-1.)	Initial Contact Resistance	≤25mΩ
Electric Shock Protection	IEC 536, Class II	Short-Circuit Protection*	Cartridge fuses gl 10 A-500V 10, 3x381 100 KA
Temperature Ratings	Storage: -40° to 80°C (-40° to 176° F) Operating: -25° to +70°C (-13° to 158° F)	Terminal Markings	According to CENELEC EN 50013
Working Positions	All working positions are allowed	Connections	Single screw with non-loosening plate clamp, 14AWG max., Tighten to 0.8Nm max
Mechanical Life	Pushbuttons, selector switches, joy stick switches: 1,000,000 operations Emergency mushrooms and push-push pushbuttons: 300,000 operations	Contacts Operation	Self-cleaning types EN01 (N.C.) EN 10 (N.O.) slow action, positive opening
Positive Opening Operation	(according to IEC 947-5-1) All functions incorporating an NC contact are positive opening operation	Operation Frequency	3600 operations per hour max.
		Utilization Category	AC15 (Control of AC electromagnetic loads) 24 volts AC at 10 amps 130 volts AC at 6.5 amps DC13 (Control of DC electromagnetic loads) 24 volts DC at 1.5 amps 110 volts DC at 0.5 amps

*Note: Recommended, not supplied

To obtain the most current agency approval information, see the Agency Approval Checklist section on the specific part number's web page.