

HLP Series Pressure Controller

Descriptions

For use with fluorinated refrigerants as well as with air and water.
(Allowable Fluid Temp.: -10°C ~+110°C)
Various contact functions available,
With SPDT contact mechanism,
Renovated micro-switch structure ensures the reliable switch function,
Manual-controlled and no use of other instruments to have a function test,
Flexible mounting plate suits various kinds of application.
Our products can substitute for congeneric import products, such as JOHNSON, DANFOSS, SAGINOMIYA, 3S, RANCO and so on

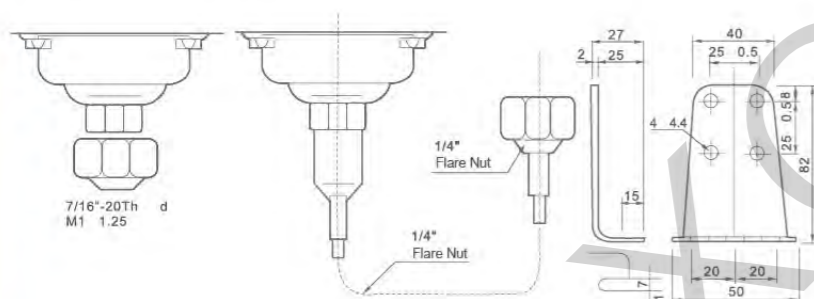


Specification

Model	Range(bar)		Differential(bar)		Factory Setting(bar)		Max. Bellows Press(bar)
	Min.	Max.	Min.	Max.	OFF	ON	
HLP503	-0.7	3	0.2	1.5	2	1	16.5
HLP506	-0.7	6	0.6	4	3	2	16.5
HLP506M	-0.7	6	Duplicate voltage disparity≤1		3	Manual Reset	16.5
HLP110	1	10	1	3	6	5	16.5
HLP516	5	16	1	4	10	8	35
HLP520	5	24	2	5	16	13	35
HLP530D	5	30	5	10	20	15	35
HLP530	8	30	Fixed3-5		20	15-17	35
HLP530M	8	30	Duplicate voltage disparity≤4		20	Manual Reset	35

Model	Press Side	Range(bar)		Differential(bar)		Factory Setting(bar)		Max. Bellows Press(bar)
		Min.	Max.	Min.	Max.	OFF	ON	
HLP830	Low Side	-0.7	6	0.6	4	3	2	16.5
	High Side	8	30	Fixed 3~5		2	15	35
HLP830HM	Low Side	-0.7	6	0.6	4	3	2	16.5
	High Side	8	30	Duplicate voltage disparity≤4		20	Manual Reset	35
HLP830HLM	Low Side	-0.7	6	Duplicate voltage disparity≤4		3	Manual Reset	16.5
	High Side	8	30	Duplicate voltage disparity≤4		20	Manual Reset	35

Way of Connection



Slight Moving Switch's Date

Specified Electric Current(A)	Specified Voltage(V)	
	A.C. 125	A.C. 125
Non-Inductive Current	48	12
Maximum Load	48	12
Twinking Electric Current	228	72

XGT Series Pneumatic Gear Vibrator

Feature

Product Features

Vibration intensity can be adjusted based on air pressure, can immediately start, stop, fast, low-noise, vibration force, security.

Application

Feed material conveyor, vibrating screening, vibrating hopper, to help fill packaging, foundry sand mold vibration.

Works

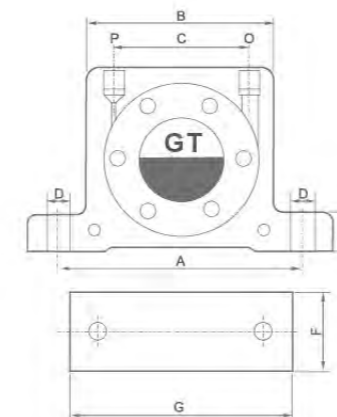
Copper eccentric gear installed counterweight impact at intake charge into the gear thrust gear rotates, the eccentric rotation of the centrifugal weight with vibration, the gear driven by a bearing, low noise.



Specification

Model	Frequency(V.P.M)			Vibration power(N)			Air consumption(/min)		
	0.2Mpa	0.4Mpa	0.6Mpa	0.2Mpa	0.4Mpa	0.6Mpa	0.2Mpa	0.4Mpa	0.6Mpa
XGT-8	34.850	42.000	45.500	980	2.100	2.800	46	80	112
XGT-10	27.500	35.000	37.500	840	1.390	2.400	46	80	112
XGT-13	26.000	30.000	33.000	1.400	2.440	3.730	120	200	290
XGT-16	17.000	21.500	24.000	1.220	2.090	3.160	120	200	290
XGT-20	17.000	20.000	23.000	2.170	4.040	5.520	185	325	455
XGT-25	12.000	15.500	17.000	2.120	3.510	5.070	185	325	455
XGT-32	13.000	14.000	16.000	3.380	5.430	7.540	330	530	745
XGT-36	7.800	10.000	13.000	3.300	5.000	7.150	330	530	745
XGT-40	7.500	8.800	9.500	4.350	7.350	9.850	408	428	680
XGT-48	5.800	7.500	9.700	4.950	7.750	10.6007	408	428	680
XGT-60	4.758	6.530	8.515	5.700	9.800	11.150	505	600	920

Overall Dimensions



Dimension Sheet

Model	A	B	C	D	E	F	G	P/O
XGT-8	68	50	28	7	12	35	86	1/8
XGT-10	68	50	28	7	12	35	86	1/8
XGT-13	90	65	39	9	16	43	113	1/4
XGT-16	90	65	39	9	16	43	113	1/4
XGT-20	104	82	56	9	17	56	128	1/4
XGT-25	104	82	56	9	17	56	128	1/4
XGT-32	130	103	76	11	21	73	160	3/8
XGT-36	130	103	76	11	21	73	160	3/8
XGT-40	152	122	85	18	27	80	194	3/8
XGT-48	152	122	85	18	27	80	194	3/8
XGT-60	195	140	96	21	30	95	240	1/2