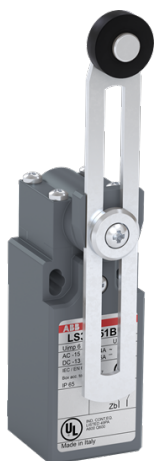


PRODUCT-DETAILS

# LS31P51B11

## LS31P51B11 Limit Switch



### General Information

Extended Product Type	LS31P51B11
Product ID	1SBV010151R1211
EAN	3471522000972
Catalog Description	LS31P51B11 Limit Switch
Long Description	LS31P51B11 is a 30 mm wide, standard Limit Switch made of fiber-glass reinforced UL-V0 material, with 2 mounting holes at the top, 1 Pg11 cable entry on the bottom, adjustable plastic roller lever (Ø18 mm) actuator and 1 N.O + 1 N.C snap action (Zb type) contacts

### Ordering

EAN	3471522000972
Minimum Order Quantity	10 piece
Customs Tariff Number	85364900

### Dimensions

Product Net Width	30 mm
Product Net Height	98.5 mm
Product Net Depth / Length	45.5 mm
Product Net Weight	0.092 kg

## Container Information

Package Level 1 Units	box 1 piece
Package Level 1 Width	54 mm
Package Level 1 Height	118 mm
Package Level 1 Depth / Length	32 mm
Package Level 1 Gross Weight	0.106 kg
Package Level 1 EAN	3471522000972
Package Level 2 Units	10 piece
Package Level 2 Gross Weight	1 kg

## Environmental

Ambient Air Temperature	Operation -25 ... +70 °C Storage -30 ... +80 °C
Resistance to Vibrations acc. to IEC 60068-2-6	25g (10 to 500 Hz) no change in position of contacts greater than 100 µs
Resistance to Shock acc. to IEC 60068-2-27	Half-sine Pulse for 11 ms, No Change in Contact Position 50 m/s <sup>2</sup>
RoHS Status	Following EU Directive 2011/65/EU

## Technical UL/CSA

Pilot Duty of Contact Elements acc. UL508	A600 Q600
Flammability According to UL94	V-0

## Safety Information

B10d Value	30 Millions operations
------------	------------------------

## Additional Information

Action Type of the Contact Element (acc. to IEC 60947-5-1)	Snap action contacts
Actuator Type	adjustable Ø 18 mm polyamide roller lever
Actuation Speed	acc. to IEC 60947-5-1 Max. 1.5 m/s acc. to IEC 60947-5-1 Min. 0 m/s
Actuation Torque	acc. to IEC 60947-5-1 Min. 0.1 N·m
Angular Head Adjustment	adjustable head every 90°
Angular Lever Adjustment	10° in 10°
Climatic Withstand	according to IEC 68-2-3 and salty mist according to IEC 68-2-11
Conventional Free-air Thermal Current (I <sub>th</sub> )	acc. to IEC 60947-5-1, q = 40 °C 10 A
Connecting Capacity	Bar AWG 20 ... AWG 14 mm <sup>2</sup> Bar 0.5 ... 2.5 mm <sup>2</sup>
Consistency (Measured over 1 Million Operations)	0.1 mm
Contact Element Form (acc. to IEC 60947-5-1)	Zb
Connecting Terminals (delivered in open	M3.5 (+,-) pozidriv 2 screw with cable clamp

position)	
Degree of Protection	acc. to IEC 60529 IP65
Electrical Shock Protection acc. to IEC 536	Double insulation - Class II
Maximum Electrical Switching Frequency	3600 cycles per hour (AC-15) 3600 cycles per hour (DC-13) 3600 cycles per hour
Mechanical Durability	0 cycle
Mounting by Screws (not supplied)	2 x M4 screws
Mounting Position	all positions are authorised
Movement to be Detected	30° Cam Translation Movement
Number of Auxiliary Contacts NC	1
Number of Auxiliary Contacts NO	1
Number and Type of Bottom Cable Glands	Pg 11 cable gland
Order Multiple	1 piece
Positive Opening Operation of NC Contact (s)	No
Product Main Type	LS30
Product Name	Limit Switch
Rated Frequency (f)	Supply Circuit 50 60 Hz
Rated Impulse Withstand Voltage (U <sub>imp</sub> )	6 kV
Rated Insulation Voltage (U <sub>i</sub> )	acc. to IEC 60947-5-1 and VDE 0110 (Gr. C) 500 V acc. to UL/CSA 600 V
Rated Operational Current AC-15 (I <sub>e</sub> )	(230 V AC) 3.1 A (400 V) NC 4 (24 V) 10 A (130 V) 5.5 A (240 V) 3 A
Rated Operational Current DC-13 (I <sub>e</sub> )	(24 V) 6 A (110 V) 0.6 A (125 V) 0.55 A (250 V) 0.4 A
Resistance Between Contacts	25 E45
RoHS Date	20171115
Standards	IEC 60947-1, IEC 60947-5-1, EN 60947-1, EN 60947-5-1, UL 508 and CSA C22 -2 N°14
Terminal Marking	according to EN 50013

### Certificates and Declarations (Document Number)

CQC Certificate	CQC2004010305127663
cUL Certificate	9AKK107991A7379
Data Sheet, Technical Information	1SBC141157C0202
Declaration of Conformity - CCC	2020980305001785
Declaration of Conformity - CE	1SBD250883U1000
Environmental Information	1SBD250085E1000
Instructions and Manuals	1SBC141157C0202
RoHS Information	1SBD250883U1000

---

**Classifications**

---

ETIM 4	EC001829 - Position switch modular
ETIM 5	EC001829 - Position switch modular
ETIM 6	EC000030 - End switch
ETIM 7	EC000030 - End switch
UNSPSC	39121500
WEEE Category	5. Small Equipment (No External Dimension More Than 50 cm)

---

---

**Categories**

---

Low Voltage Products and Systems → Control Products → Sensors → Limit Switches

