

**2Q Series Air Control Two-Way Valve**

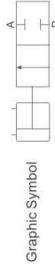
Ordering Code



**2Q** Specification Code  
2Q1: two-position, two-way  
Air Control valve

**200** Aperture of  
Flow Rate  
160:16mm  
200:22mm  
250:25mm  
350:35mm  
400:40mm  
500:50mm

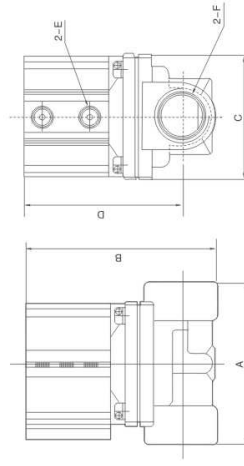
**25** Port Size  
15: G1/2"  
20: G3/4"  
25: G1"  
35: G1 1/4"  
40: G1 1/2"  
50: G2"



Specification

Model	2Q160-15	2Q200-20	2Q250-25	2Q350-35	2Q400-40	2Q500-50
Working Medium	Air, Water, Oil, Gas					
Motion Pattern	Direct Drive					
Aperture of Flow Rate(mm)	16	20	25	35	40	50
CV Value	4.8	12	7.6	24	29	48
Joint Pipe Bore	G1/2"	G3/4"	G1"	G1 1/4"	G1 1/2"	G2"
Operation Fluid Viscosity	50 CST(Below)					
Working-pressure Range	0-0.7Mpa					
Max. Pressure Resistance	1.05Mpa					
Control Pressure Range	0.3-0.6Mpa					
Operating Temperature Range	-5-100°C					
Material of Body	Brass					
Material of Oil Seal	PTFE					
Control Joint Pipe Bore	2-M5	2-G1/8"	2-G1/8"	2-G1/4"	2-G1/4"	2-G1/4"

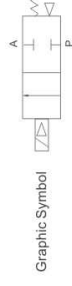
Overall Dimensions



Dimension Sheet

Model	A	B	C	D	E	F
2Q160-15	67	89	57	75	M5	G1/2"
2Q200-20	99	116	57	95	G1/8"	G3/4"
2Q250-25	99	116	57	95	G1/8"	G1"
2Q350-35	127	123	93	97	G1/4"	G1 1/4"
2Q400-40	123	146	95	116	G1/4"	G1 1/2"
2Q500-50	170	155	118	114	G1/4"	G2"

**SLP Series 2/2 Solenoid Valve(Normal Close)**



Ordering Code

SLP	06	E2	3L	S1	H
<b>SLP Series</b>	<b>Port size</b> 06: G1/8" 08: G1/4" 10: G3/8" 15: G1/2" 20: G3/4" 25: G1" 40: G1 1/4" 50: G1 1/2" 50: G2" F: Flange	<b>Seal Material</b> Blank: NBR V: VITON E: EPDM	<b>Orifice(mm)</b> 1L: 1.0 1.5L: 1.5 2.5L: 2.5 3L: 3.0 4L: 4.0 5L: 5.0 6L: 6.0 8L: 8.0 10L: 10.0 10.5L: 10.5 13L: 13.0 20L: 20.0 25L: 25.0 35L: 35.0 40L: 40.0 50L: 50.0	<b>Body material</b> Blank: Brass S1: SS316	<b>Control style</b> Blank: Normal close H: Normal open
<b>SLP Series</b>	<b>Port size</b> 06: G1/8" 08: G1/4" 10: G3/8" 15: G1/2" 20: G3/4" 25: G1" 40: G1 1/4" 50: G1 1/2" 50: G2" F: Flange	<b>Seal Material</b> Blank: NBR V: VITON E: EPDM	<b>Orifice(mm)</b> 1L: 1.0 1.5L: 1.5 2.5L: 2.5 3L: 3.0 4L: 4.0 5L: 5.0 6L: 6.0 8L: 8.0 10L: 10.0 10.5L: 10.5 13L: 13.0 20L: 20.0 25L: 25.0 35L: 35.0 40L: 40.0 50L: 50.0	<b>Body material</b> Blank: Brass S1: SS316	<b>Control style</b> Blank: Normal close H: Normal open

\* SLP series, 2 port, 2 position, 1/8" port size, NBR Seal, AC110V, Orifice: 3mm, Brass valve body, normal close, model: SLP06E-1L3  
 \* SLP series, 2 port, 2 position, 3/8" port size, VITON Seal, AC220V, Orifice: 13mm, SS316 valve body, normal open, model: SLP10VEZ-13LS1H

Product Features

- \* Normal Close available body: brass, SS316
- \* Multiple seals are available for different medium
- \* Wide size range from 1/8" to 2" with both thread and flange connection.
- \* Diaphragm pilot solenoid valve, with lower working pressure.

Overall Dimensions

Ø3mm, Ø4mm, G1/8", G1/4", G3/8"

Ø10.5mm, G1/4", G3/8", G1/2"

big orifice

