

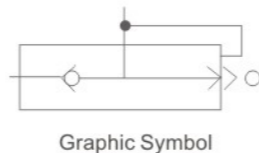
XKP Series Quick Exhaust Valve



Ordering Code

XKP
Series Code
XKP:Quick Exhaust Valve

L15
Port Size
L6:G1/8"
L8:G1/4"
L10:G3/8"
L15:G1/2"
L20:G3/4"
L25:G1"
L32:G1-1/4"
L40:G1-1/2"
L50:G2"

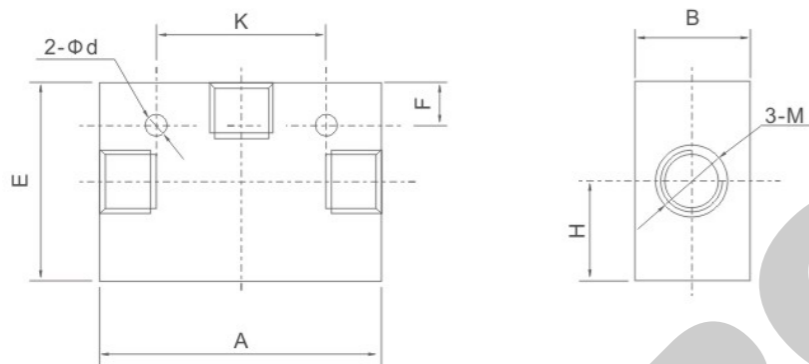


Graphic Symbol

Specification

Model	XKP-L6	XKP-L8	XKP-L10	XKP-L15	XKP-L20	XKP-L25	XKP-L32	XKP-L40	XKP-L50	
Section Area	P→A	10	20	40	60	110	190	300	400	650
	A→□	20	40	60	110	190	300	400	650	900
Leak Out Flow(cm ³ /min)	≤10		≤25			≤50		≤70		
Working Medium	Compressed Air									
Operating Temperature Range	-5~+60°C									
Working-pressure	0.05~1.2MPa									

Overall Dimensions



Dimension Sheet

Model	M	A	K	B	E	H	F	d
XKP-L6	G1/8	-	-	36	41	10	-	-
XKP-L8	G1/4	75	-	36	41	10	-	-
XKP-L10	G3/8	82	58	44	60	23	8	7
XKP-L15	G1/2		58	44	60	23	8	7
XKP-L20	G3/4	128	98	72	95	36	8	10
XKP-L25	G1	158	126	88	112	44	10	10
XKP-L32	G1-1/4							
XKP-L40	G1-1/2							
XKP-L50	G2	190	148	102	130	52	10	12

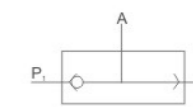
ST Series Shuttle Valve



Ordering Code

ST
Series Code
ST:Shuttle Valve

01
Port Size
01:G1/8"
02:G1/4"
03:G3/8"
04:G1/2"
06:G3/4"
08:G1"

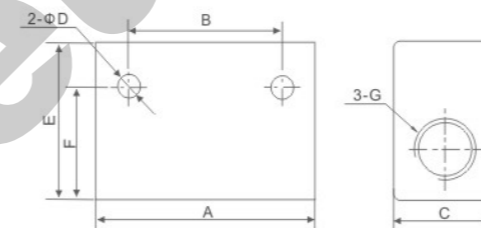


Graphic Symbol

Specification

Model	ST-01	ST-02	ST-03	ST-04	ST-06	ST-08
Working Medium	Air					
Effective Section Area	7.5mm ²	21mm ²	40mm ²	60mm ²	110mm ²	190mm ²
Port Size	G1/8"	G1/4"	G3/8"	G1/2"	G3/4"	G1"
Working Pressure Range	0~1.0MPa					
Operating Temperature Range	-5~60°C					

Overall Dimensions



Dimension Sheet

Model	A	B	C	D	E	F	G
ST-01	40	24	16	4.5	25	20.5	G1/8"
ST-02	50	35	22	5.5	35	25	G1/4"
ST-03	75	48	30	7	50	42	G3/8"
ST-04	75	48	30	7	50	42	G1/2"
ST-06	110	72	40	7	70	58	G3/4"
ST-08	110	72	40	7	70	58	G1"

CV Series Vacuum Valve



Ordering Code

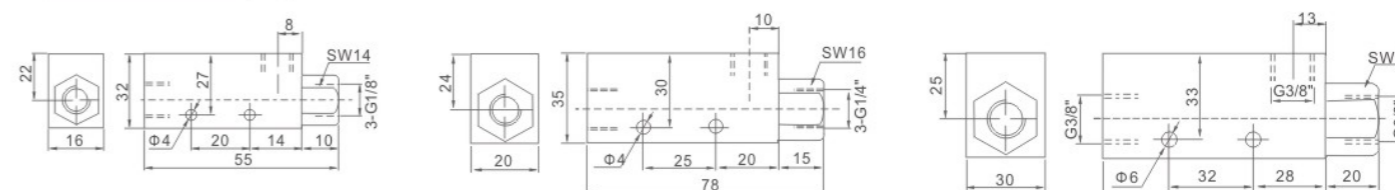
CV
Series Code
CV:Vacuum Valve

15L
Port Size
10L:G1/8"
15L:G1/4"
20L:G3/8"

Specification

Model	CV-10L	CV-15L	CV-20L
Working Medium	Air		
Working pressure	1.0MPa		
Shortest Excitation Time	0.05 Second		
Leakage Volume	≤10cm ³ /min		

Overall Dimensions



CV-10L

CV-15L

CV-20L