

DNC Series ISO6431 Standard Cylinder



DNC 50 x 100



MDNC 50 x 100



TDNC 50 x 100

Ordering Code

□ **DNC** 50 X 100 25 S □

Tube Type

Blank-Square Type
T-Tie-rod Type
M-Mickey Mouse Type
DNC-I:ISO6431 Standard Two Axis Double Action Type
DNC-J:ISO6431 Two Axis Stroke Adjust Type

Series Code

DNC:ISO6431 Standard Double Action Type
DNC-D:ISO6431 Standard Two Axis Double Action Type
DNC-J:ISO6431 Two Axis Stroke Adjust Type

Cylinder Bore

32mm-125mm

Adjust Stroke

25:25mm
50:50mm
75:75mm

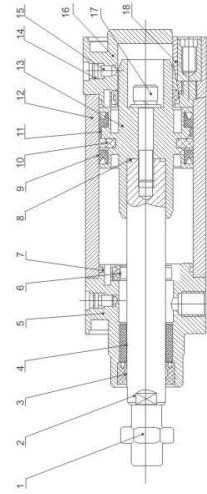
Magnet Code

Blank/Without Magnet
S:With Magnet

Fixed Type

Blank-Normal type
LB:Front and back fixed type
FA:Front cover fixed type(front flange type)
FB:Back cover fixed type(back flange type)
CA:Back cover fixed type (Single earring)
CB:Back cover fixed type(Double earring)
SBB:Back cover fixed type

Internal structure



Specification

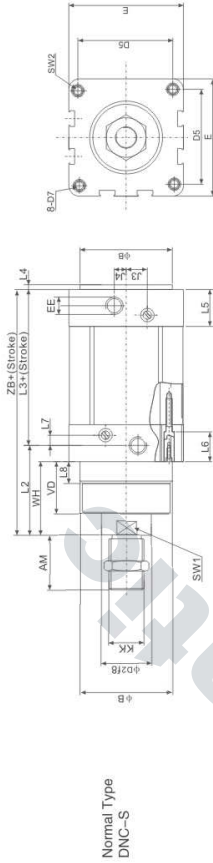
Bore(mm)	Stroke					
	32	40	50	63	80	100
Motion Pattern	Double Action					
Working Medium	Filtered Air					
Compression Pressure	1.5MPa					
Max. Operating Pressure	1.0MPa					
Min. Operating Pressure	0.1MPa					
Buffer	Air Buffer(Standard)					
Condition Temperature	-5~70℃					
Operating Speed	50~600mm/s					
Port Size	G1/8"	G1/4"	G1/2"	G3/8"	G1/2"	G1/2"

Stroke

Bore	Standard Stroke	Buffer Stroke	Stroke Range
32	40	20	10-2000
50	25, 40, 50, 80	22	10-2000
63	100, 125, 160, 200, 250, 320	32	10-2000
80	400, 500	35	10-2000

DNC Series ISO6431 Standard Cylinder

Overall Dimensions



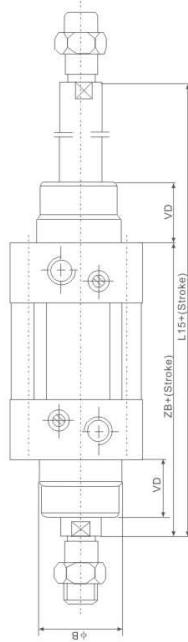
Normal Type
DNC-S

Dimension Sheet

Bore	AM	B	D2	D5	D7	E	EE(G)	J3	J4	KK	L2	L3	L4	L5	L6	L7	L8	SW1	SW2	VD	WH	ZB
32	22	30	12	32.5	M6	45	1/8	6	5.2	M10×1.25	40	80	4	26	22	3.3	8	10	6	16	26	120
40	24	35	16	38	M6	54	1/4	8	6	M12×1.25	46	89	4	29.6	22	3.6	10	13	6	20	30	135
50	32	40	20	46.5	M8	64	1/4	10	8.5	M16×1.5	54	90	4	30	22	5.1	10	17	8	27	37	144
63	32	45	20	56.5	M8	75	3/8	12.4	10	M16×1.5	57	101	4	35.5	22	6.6	10	17	8	27	37	158
80	40	45	25	72	M10	93	3/8	12.5	8	M20×1.5	65	109	4	36	25	10.5	10	22	10	34.5	46	174
100	40	55	25	89	M10	110	1/2	11.8	10	M20×1.5	71	118	4	39	25	8	12.5	22	10	38	51	189
125	54	60	32	110	M12	134	1/2	13	8	M27×2	95	128	6	44.7	30	14	12.5	28	12	46	65	223

Overall Dimensions

**Double Piston Rod Type
DNC-D-S**



Dimension Sheet

Bore	32	40	50	63	80	100	125
B	30	35	40	45	45	55	60
L15	146	165	182	194	220	240	286
VD	16	20	27	27	34.7	38.2	46
ZB	120	135	144	159	174	189	223

DNCB Series Booster Cylinder



DNCB-50 x 25 x 50

Specification

Motion Pattern	Filtered Air
Compression Pressure	1.5MPa
Max. Operating Pressure	1.0MPa
Min. Operating Pressure	0.1MPa
Condition Temperature	-5~70℃

Product Instruction

Booster cylinder combine 2 or more ISO15552 standard cylinder with the same bore and stroke. Create twice or multiple force as standard cylinder. The connection of 2 or more cylinders are linked with the same material Compact structure and easy for installation.