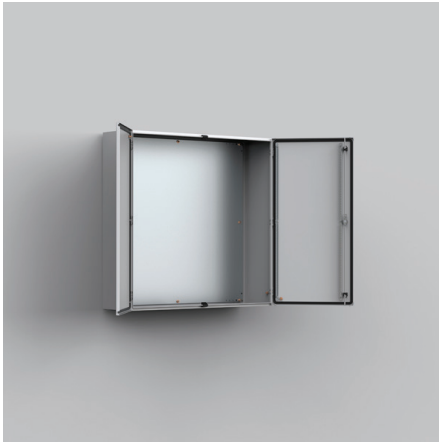


MAD1201230R5

MILD STEEL, DOUBLE DOOR ENCLOSURE



With mounting plate

D	300
H	1200
N° of locks	1*
Openings	2
Size	510x96
Type	4
W	1200
d	282
h	1170
w	1150
Item no.	MAD1201230R5

Material: Body: 1.5 mm mild steel. Gland plate: 1.4 mm mild steel. Door: 2 mm mild steel Mounting plate: 2 mm galvanized steel / 2.5 mm MAD1001030R5 and above.

Body: Folded and seam welded. Four 8.5 mm diameter holes for wall fixing, pressed out in 20.4 mm diameter x 2 mm depressions to allow air circulation around the rear part of the enclosure.

Door: Surface mounted with 130° opening. Concealed removable hinges with captive pin. Two removable mounting profiles in the right hand door. Sealing is ensured by an extruded one piece polyurethane gasket.

Lock: Customised lock with double-bit for easy opening of the door, double-bit 3 mm insert and 90° movement. Espagnolette three point locking. Other inserts are available as an accessory.

Mounting plate: The mounting plate is marked vertically at 10 mm intervals for easy horizontal positioning of equipment. On the top and bottom there are holes to facilitate cable fixing. Fixed onto M8 press welded studs to the rear of the enclosure. All sides from 800 mm and above are strengthened by folded edges. By using the AMG accessory the mounting plate position can be adjusted to any depth.

Gland Plate Opening: Situated at the far rear of the enclosure to make cabling onto the mounting plate easier.

Protection: IP 55 | TYPE 12, 13 | IK 10. For outdoor installation the use of a rain hood ARF and 100% polyester paint coating is recommended. The corrosion resistance must be taken into consideration.

Finish: RAL 7035 structured powder coating.

Delivery: Enclosure with doors, and two door mounting profiles on the right door. Gland plate(s) with gasket(s), metallic DIN 3 mm key, and mounting accessories. Earthing facilities.