

proSense® Thermocouple and RTD Connectors

Overview

- Glass-filled high quality thermoplastic body with original thermocouple material pins and spring-loaded inserts
- Polarized pins
- Molded barriers prevent short circuit
- Captive central cover screw for easy assembly
- Easy wire connection pressure plate construction
- Stainless steel screws with combination head (Slotted and Phillips)
- 3-pin standard connectors have a third pin for ground or continuous shield, or for 3-wire RTDs



Thermocouple and RTD Connectors									
Part Number	Pcs/ Pkg	Wt(lb)	Price	Sensor Type	Connector Type	Temperature Rating	Body Color	Wire Size	Wire Cable Clamp Bracket
THMJ-SP	1	0.5	\$3.50	J	Standard round pin plug	Max continuous 400°F (200°C)	Black	32 AWG (0.2 mm) to 14 AWG maximum (2.0 mm)	WCB-S
THMJ-SJ	1	0.5	\$4.50		Standard round pin jack				–
THMJ-SPJ	1	0.5	\$8.00		Standard round direct mount jack				–
THMJ-MP	1	0.5	\$3.25		Miniature flat pin plug			40 AWG (0.08 mm) to 20 AWG maximum (0.8 mm)	WCB-M
THMJ-MJ	1	0.5	\$3.75		Miniature flat pin jack				–
THMJ-MPJ	1	0.5	\$5.25		Miniature round direct mount jack				–
THMK-SP	1	0.5	\$4.00	K	Standard round pin plug	Max continuous 662°F (350°C)	Yellow	32 AWG (0.2 mm) to 14 AWG maximum (2.0 mm)	WCB-S
THMK-SJ	1	0.5	\$4.75		Standard round pin jack				–
THMK-SPJ	1	0.5	\$7.75		Standard round direct mount jack				–
THMK-MP	1	0.5	\$3.50		Miniature flat pin plug			40 AWG (0.08 mm) to 20 AWG maximum (0.8 mm)	WCB-M
THMK-MJ	1	0.5	\$3.75		Miniature flat pin jack				–
THMK-MPJ	1	0.5	\$5.75		Miniature round direct mount jack				–
THMK-HSP	1	0.5	\$8.75	Standard hi-temp round pin plug	Max continuous 662°F (350°C)	Brown	32 AWG (0.2 mm) to 14 AWG maximum (2.0 mm)	WCB-S	
THMK-HSJ	1	0.5	\$10.50						Standard hi-temp round pin jack
THMT-SP	1	0.5	\$3.75	T	Standard round pin plug	Max continuous 400°F (200°C)	Blue	32 AWG (0.2 mm) to 14 AWG maximum (2.0 mm)	WCB-S
THMT-SJ	1	0.5	\$5.00		Standard round pin jack				–
THMT-SPJ	1	0.5	\$7.75		Standard round direct mount jack				–
THMT-MP	1	0.5	\$3.50		Miniature flat pin plug			40 AWG (0.08 mm) to 20 AWG maximum (0.8 mm)	WCB-M
THMT-MJ	1	0.5	\$4.00		Miniature flat pin jack				–
THMT-MPJ	1	0.5	\$6.00		Miniature round direct mount jack				–
RTD-SP	1	0.5	\$6.75	RTD	Standard round pin plug	White	32 AWG (0.2 mm) to 14 AWG maximum (2.0 mm)	WCB-S	
RTD-SJ	1	0.5	\$8.75		Standard round pin jack				

THMT-SP



THMT-SJ



THMK-SP



THMK-SJ



THMJ-MP



THMJ-MJ



THMT-SPJ



THMT-MPJ



RTD-SP



RTD-SJ



THMK-HSP



THMK-HSJ

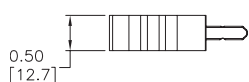
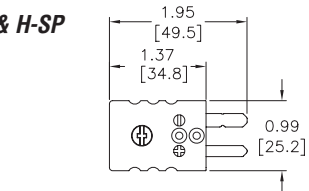


pro^{ense} Thermocouple and RTD Connectors

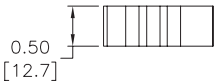
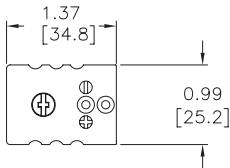
Dimensions

inches [mm]

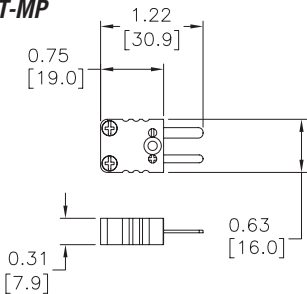
THMJ, K, T, & H-SP



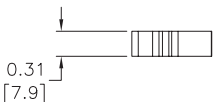
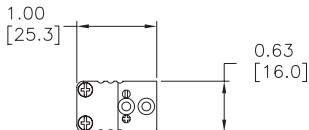
THMJ, K, T, & H-SJ



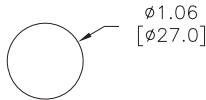
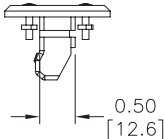
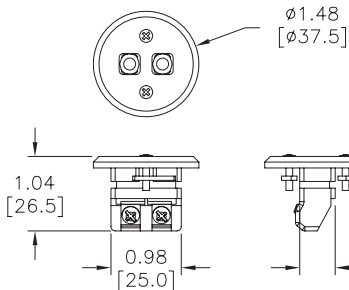
THMJ, K, & T-MP



THMJ, K, & T-MJ

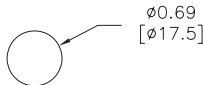
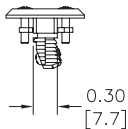
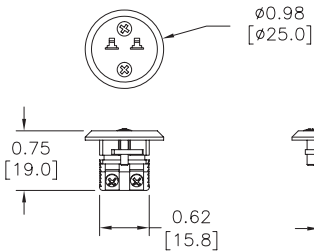


THMJ, K, & T-SPJ



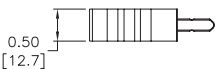
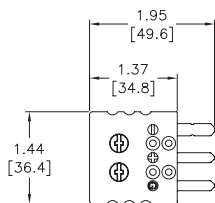
PANEL CUT-OUT
PANEL THICKNESS: 5 mm MAX.

THMJ, K, & T-MPJ

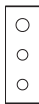
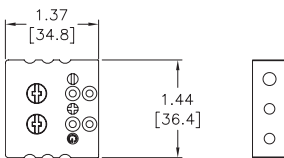


PANEL CUT-OUT
PANEL THICKNESS: 5 mm MAX.

RTD-SP



RTD-SJ



proense® Thermocouple and RTD Connectors

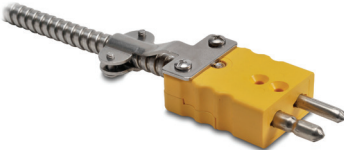
WCB-S



WCB-M



WCB-S Application



WCB-M Application

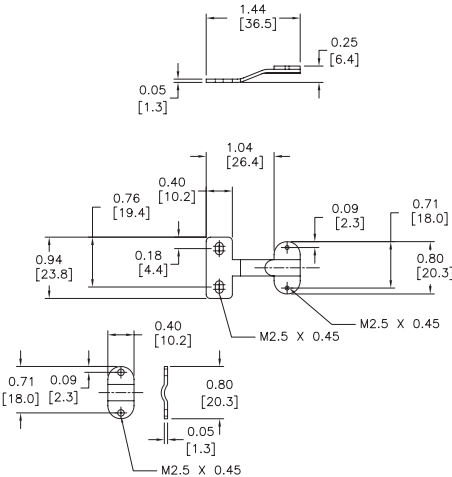


Thermocouple and RTD Connectors Accessories				
Part Number	Pcs/ Pkg	Wt(lb)	Price	Description
WCB-S	4	0.5	\$5.25	Wire / cable clamp bracket for use with standard thermocouple and RTD connectors.
WCB-M	4	0.5	\$5.25	Wire / cable clamp bracket for use with miniature thermocouple connectors.

Dimensions

inches [mm]

WCB-S



WCB-M

